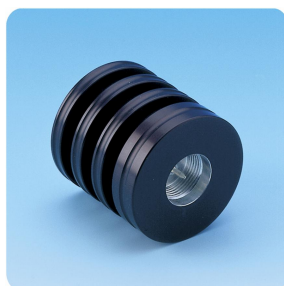


# COAXIAL LOADS (I)

## DESCRIPTION

- Procom loads/terminations are matched to 50 ohms characteristic impedance. Matched loads provide a termination designed to absorb all the incident power with very little reflection. Terminations are used in a wide variety of systems; any port of a multi-port microwave device that is not involved in the measurement, or in a system, should be terminated in its characteristic impedance in order to ensure an accurate measurement.
- This series of coaxial loads have very low SWR and are especially suitable for use with:
  - Power Hybrids.
  - Isolators.
  - Coaxial Transmission Lines.
  - Power Monitors.
  - Wattmeters.
  - Receiver Multicouplers.
- The surface of the dummy loads is black anodized.



PRL 15W



PRL 30W



PRL 3W



PRL 1W

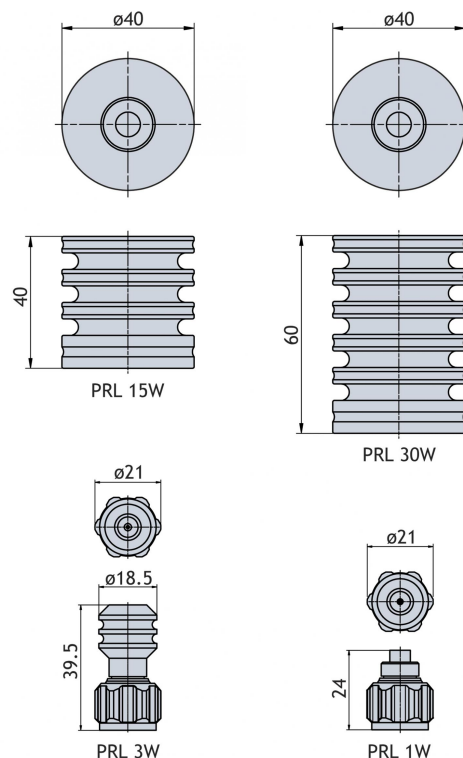
## ORDERING DESIGNATIONS

TYPE	PRODUCT NO.
PRL 1W	210000640
PRL 3W	210000869
PRL 15W	210000553
PRL 30W	210000554

## SPECIFICATIONS

ELECTRICAL				
MODEL	PRL 1W	PRL 3W	PRL 15W	PRL 30W
FREQ. RANGE	0-1 GHz	0-1.5 (3.5) GHz	0-1.5 (2.5) GHz	0-1.5 (2.5) GHz
MAX. INPUT POWER	1W	3W	15W	30W
MAX. INPUT POWER with extra cooling	1W	3W	30W	60W
IMPEDANCE	Nom. 50 Ω	Nom. 50 Ω	Nom. 50 Ω	Nom. 50 Ω
SWR	< 1.5	< 1.15 (≤ 1.5)	< 1.15 (≤ 1.5)	< 1.15 (≤ 1.5)
MECHANICAL				
TEMP. RANGE	-30°C → +60°C	-30°C → +60°C	-30°C → +60°C	-30°C → +60°C
CONNECTORS	N-male	N-male	N-male	N-male
DIMENSIONS	ø21 x 24 mm	ø21.2 x 39.5 mm	ø40 x 40 mm	ø40 x 60 mm
WEIGHT	Approx. 25 g	Approx. 50 g	Approx. 105 g	Approx. 180 g

## DIMENSIONS



PROCOM France S.A.R.L. se réserve le droit d'améliorer les spécifications sans préavis.  
27/02/15