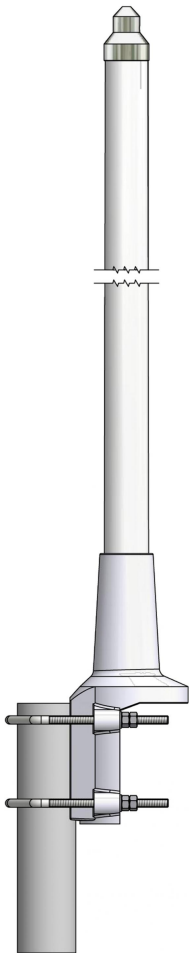


CXL 2-1HD-PT

Sturdy, 0 dBd, Omnidirectional lightning protected Base Station Antenna for the 144 - 175 MHz Bands

DESCRIPTION

- CXL 2-1HD-PT is 0 dBd, vertically polarized, omnidirectional base station antenna for the entire 2 m band.
- The antenna is provided with our sturdy type "HD" mast mount - a heavy-duty, multipurpose mounting bracket made of non-corrosive aluminium. The accompanying U-bolts and fittings are made of stainless steel.
- The antenna can be mounted on mast tubes of 58 to 105 mm in outer diameter. Furthermore, the construction of the mount makes it possible to lead the cable either along the inside or on the outside of the mast tube.
- The antenna element is sealed in a high-quality, conical glass fibre tube with low wind load, ensuring undisturbed performance in all climates.
- To substantially reduce noise caused by atmospherical discharges, all metal parts in the antenna are DC-grounded. Consequently, the antenna shows a DC-short across the coaxial cable.
- Also available with UHF connector.



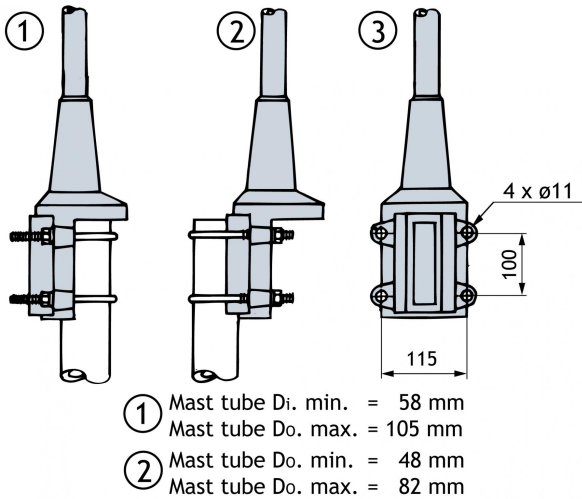
ORDERING DESIGNATIONS

TYPE	FREQUENCY	PRODUCT NO.
CXL 2-1HD-PT	144 - 175 MHz	100000515
CXL 2-1HD-PT UHF	144 - 175 MHz	100000531

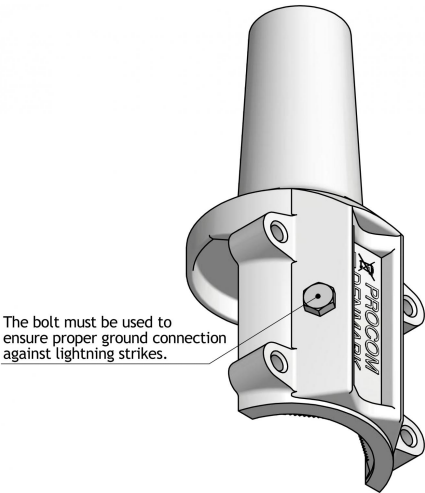
SPECIFICATIONS

ELECTRICAL	
MODEL	CXL 2-1HD-PT
ANTENNA TYPE	½ λ coaxial dipole, broad-band
FREQUENCY	144 - 175 MHz
IMPEDANCE	Nom. 50 Ω
RADIATION	Omnidirectional
POLARIZATION	Vertical
GAIN	2 dBi (0 dBd)
SWR	≤ 1.75
MAX. POWER	150 W
ANTISTATIC PROTECTION	All metal parts DC-grounded (Connector shows a DC-short)
MECHANICAL	
TEMP. RANGE	-30°C → +70°C
CONNECTOR	N-female
WIND SURFACE	0.077 m² / 0.83 ft²
WIND LOAD	90 N @ 160 km/h / 100 mph.
WIND VELOCITY	Tested to 200 km/h / 125 mph.
COLOUR	Marine white
MATERIALS	Radome: Polyurethane-coated glass fibre Mounting bracket: Seawater resistant aluminium, polyester-coated
TOTAL HEIGHT	Approx. 1.5 m / 59.06 in.
WEIGHT	Approx. 5.8 kg / 12.79 lb.
MOUNTING	On 58 - 105 mm / 2.28 - 4.13 in. dia. mast tube

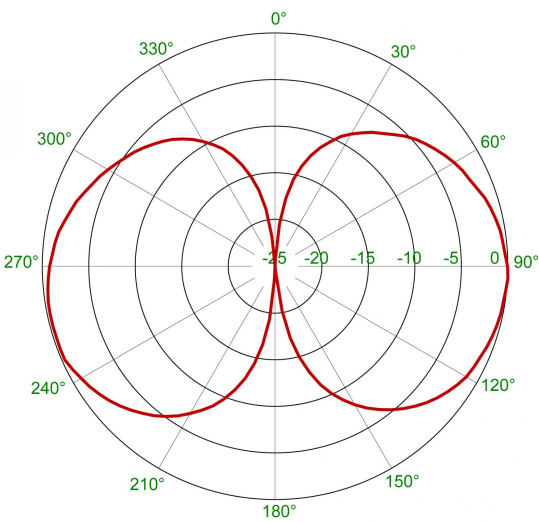
MULTI-PURPOSE MOUNTING BRACKET



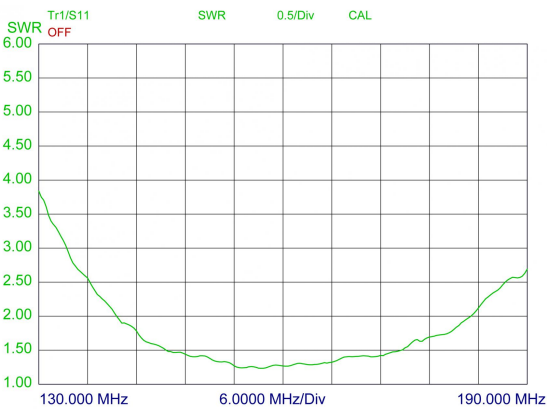
MOUNTING DESCRIPTION FOR GROUND CONNECTION



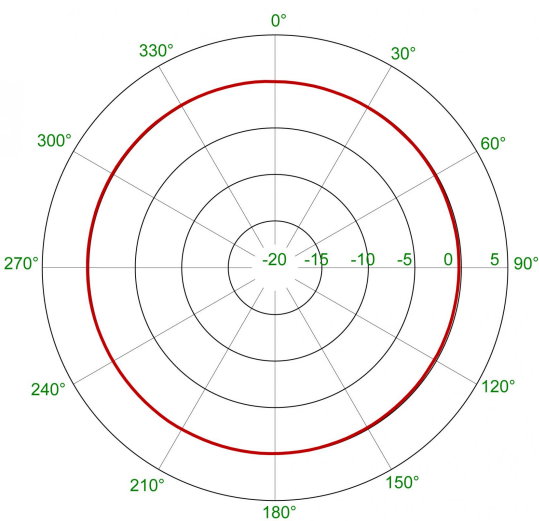
TYPICAL RADIATION PATTERN (E-PLANE)




TYPICAL SWR CURVES



TYPICAL RADIATION PATTERN (H-PLANE)



 PROCOM A/S reserve the right to amend specifications without prior notice.
15/01/15