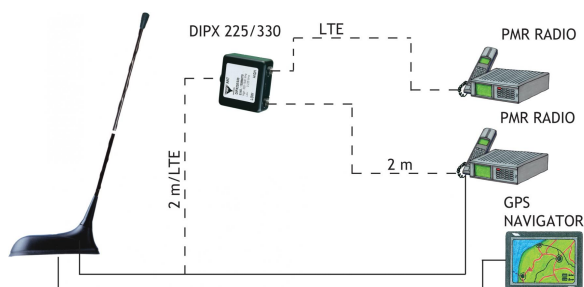


# GPS-C 150/LTE

GPS Antenna with Whip for the 150 MHz and 760-870 MHz Bands

## DESCRIPTION

- External antenna whip mounted on the GPS-Combi mount without amplifier.
  - Sturdy, general-purpose  $\frac{1}{4} \lambda$  antenna in professional quality.
  - Easily removable whip for car wash.
- GPS-antenna for fixed installations.
  - Full hemispherical coverage.
  - Right-Hand Circularly Polarized antenna (RHCP).
- When ordering the antenna, please state the centre frequency on each band.
- DIPX 225/330 included.



## SPECIFICATIONS FOR WHIP

ELECTRICAL	
MODEL	GPS-C 150/LTE
ANTENNA TYPE	Mobile antenna
FREQUENCY	150-160 MHz 760-870 MHz
IMPEDANCE	Nom. 50 $\Omega$
POLARIZATION	Vertical
GAIN	150 MHz: Approx 0 dB (acc. to EIA RS-329-1) 800 MHz: Approx 0 dB (acc. to EIA RS-329-1)
BANDWIDTH	150 MHz: 10 MHz @ SWR < 2.5 800 MHz: 110 MHz @ SWR < 2.0
SWR	$\leq 1.5$ @ f.res. in both bands
MAX. POWER	35 W
MECHANICAL	
MATERIALS	Whip: Polyethylene covered copper thread / glass fibre Black-chromed brass
COLOUR	Black
HEIGHT	Approx. 375 mm
WEIGHT	28 g
MOUNTING	On the GPS-Combi mount

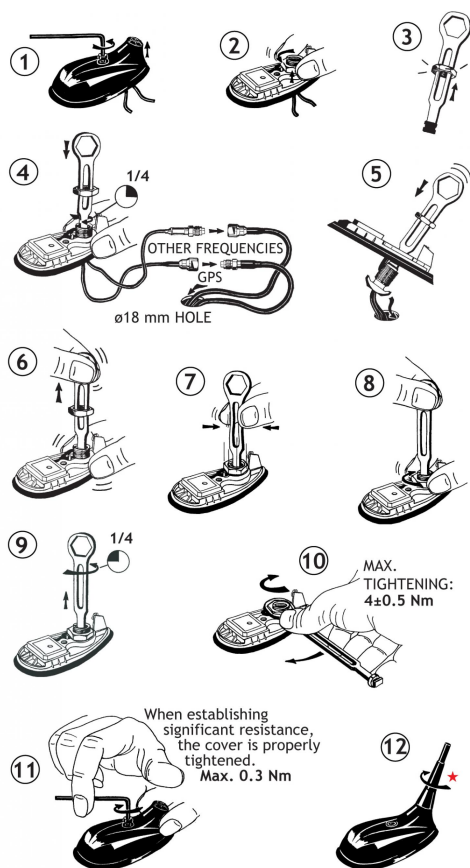
## ORDERING DESIGNATIONS

TYPE	PRODUCT NO.
GPS-C 162-174/851-869 MHz	132000168

## SPECIFICATIONS FOR GPS-COMBI MOUNT

MECHANICAL (ONLY FOR THE GPS-PART)	
MATERIALS	Cu-nite brass Stainless steel Reinforced thermoplastic
ANTENNA COLOUR	Black
TEMP. RANGE	-35° C $\rightarrow$ +75° C
CONNECTOR	FME (male for GPS)+ SMA (male for mobile antenna)
RECOMMENDED INSTALL. TORQUE	4 $\pm$ 0.5 Nm
DIMENSIONS (H x L)	Approx. 30 x 89 mm
ROOF THICKNESS	Max. 2.5 mm
WEIGHT	Approx. 114 g
MOUNTING	$\varnothing$ 18.0 mm dia. hole for roof thickness up to 2.0 mm $\varnothing$ 18.5 mm dia. hole for roof thickness 2.0 - 2.5 mm Tools for mounting included

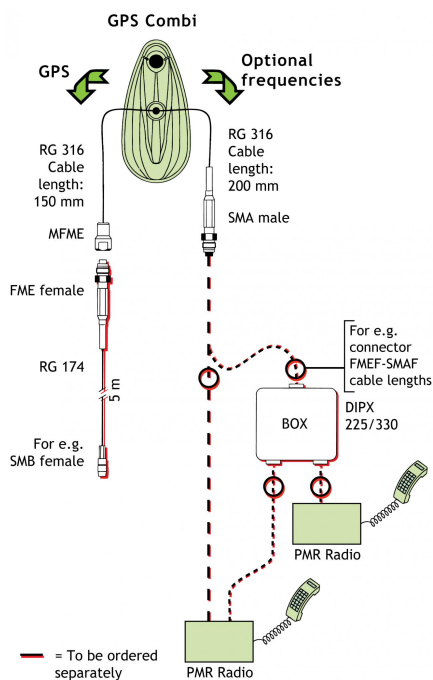
## MOUNTING INSTRUCTIONS



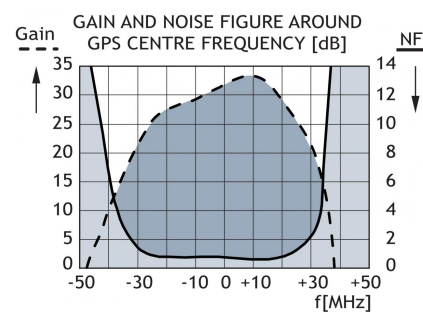
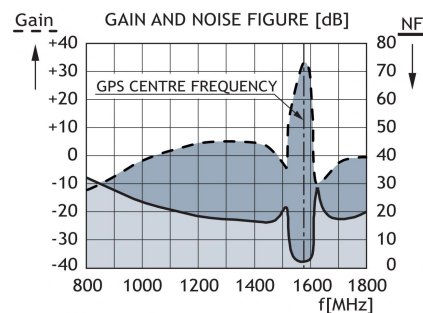
★ The whip should always be dismantled during car wash.

Do not use sealer on rubber gasket or other places.

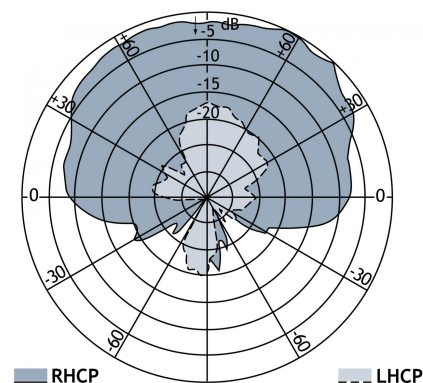
## CABLE MOUNTING



## TYPICAL RESPONSE CURVES



## VERTICAL RADIATION PATTERN



CE



PROCOM France S.A.R.L. se réserve le droit d'améliorer les spécifications sans préavis.

09/01/15