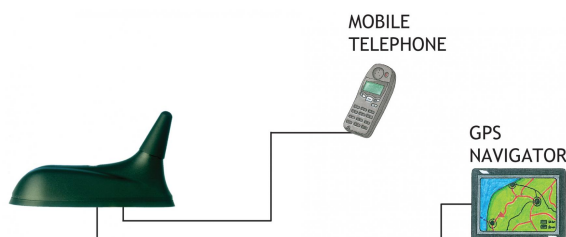
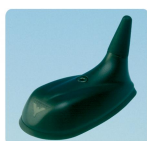


GPS-C 1800/UMTS

GPS Antenna with a 1/4 λ Mobile Antenna for the 1800 MHz and UMTS Bands

DESCRIPTION

- External antenna whip mounted on the GPS-Combi mount.
 - Black-chromed whip in nice, discrete design.
 - Mobile antenna for the 1800 MHz cellular systems (DCS-1800), and for the UMTS band.
 - Easily removable whip for car wash.
- GPS-antenna for fixed installations.
 - Full hemispherical coverage.
 - Built-in high gain, low noise amplifier.
 - Right-Hand Circular Polarisation (RHCP).
 - 5 V supply voltage (3 V respectively 12 V available on request).
 - DC supply via RF-connector.



Ordering designations

TYPE NO.	PRODUCT NO.
GPS-C 1800/UMTS	132000080

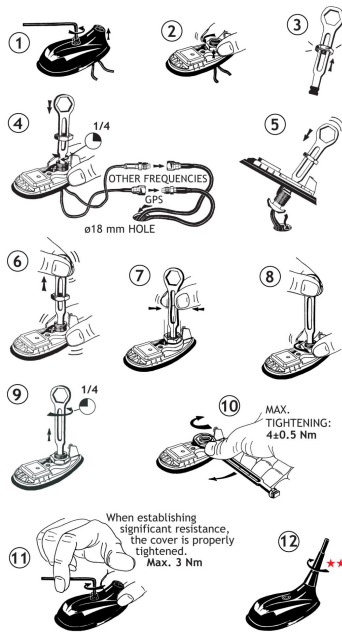
SPECIFICATIONS FOR WHIP

ELECTRICAL	
MODEL	GPS-C 1800/UMTS
ANTENNA TYPE	1/4 λ mobile antenna
FREQUENCY	1700–1900 MHz (DCS) 1900–2200 MHz (UMTS)
IMPEDANCE	Nom. 50 Ω
POLARISATION	Vertical
BANDWIDTH	≥ 500 MHz @ SWR ≤ 2.25
SWR	≤ 1.3 @ f. res.
GAIN	Approx. 0 dB (acc. to EIA RS-329-1) on both bands
MAX. POWER	25 W
MECHANICAL	
MATERIALS	Black-chromed brass
COLOUR	Black
HEIGHT	Approx. 25 mm
WEIGHT	Approx. 16 g
MOUNTING	On the GPS-Combi mount

SPECIFICATIONS FOR GPS-COMBI MOUNT

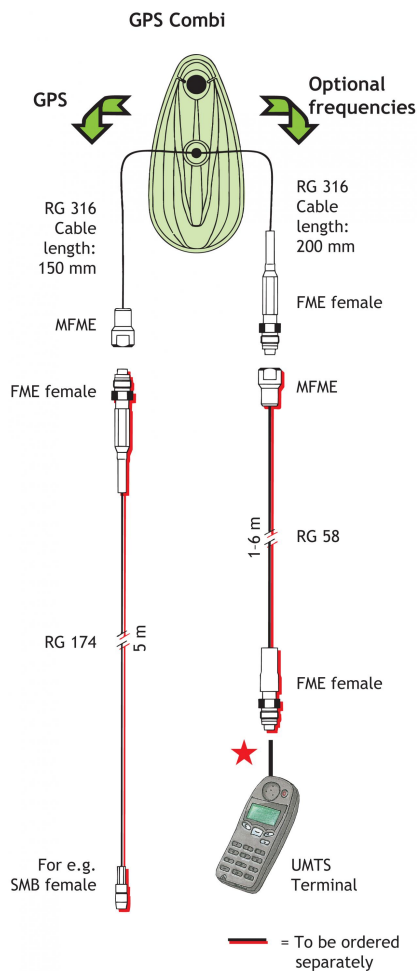
ELECTRICAL GENERAL SPECIFICATIONS	
MODEL	GPS-COMBI MOUNT
ANTENNA TYPE	Active patch antenna
FREQUENCY	1575 MHz (DCS)
IMPEDANCE	Nom. 50 Ω
POLARISATION	Circular right-hand
COVERAGE	Hemispherical
GAIN	28 dBic in axial direction (typ.)
CROSS-POLARISATION ATT.	> 10 dB (typ.)
SELECTIVITY	> 45 dB down at ± 45 MHz
BUILT-IN AMPLIFIER	
GAIN	> 30 dB (typ.)
NOISE FIGURE	< 1 dB (typ.)
P 1dB	Approx. +7 dBm
SWR (output)	≤ 2.0
SUPPLY VOLTAGE	5 ± 0.5 VDC (3 V resp. 12 V on request)
CURRENT CONSUMPTION	Approx. 25 mA
MECHANICAL (ONLY FOR THE GPS-PART)	
MATERIALS	Cu-nite brass Stainless steel Reinforced thermoplastic
ANTENNA COLOUR	Black
TEMP. RANGE	-35°C \rightarrow $+75^{\circ}\text{C}$
CONNECTOR	FME (male for GPS) + FME (female for mobile antenna)
RECOMMENDED INSTALL. TORQUE	4 ± 0.5 Nm
DIMENSIONS(H x L)	Approx. 30 x 89 mm
ROOF THICKNESS	Max. 2.5 mm
WEIGHT	Approx. 114 g
MOUNTING	$\varnothing 18.0$ mm dia. hole for roof thickness up to 2.0 mm $\varnothing 18.5$ mm dia hole for roof thickness 2.0 - 2.5 mm Tools for mounting included

MOUNTING INSTRUCTIONS

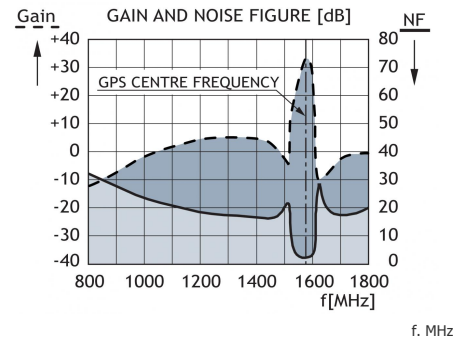


Do not use sealer on rubber gasket or other places.

CABLE MOUNTING



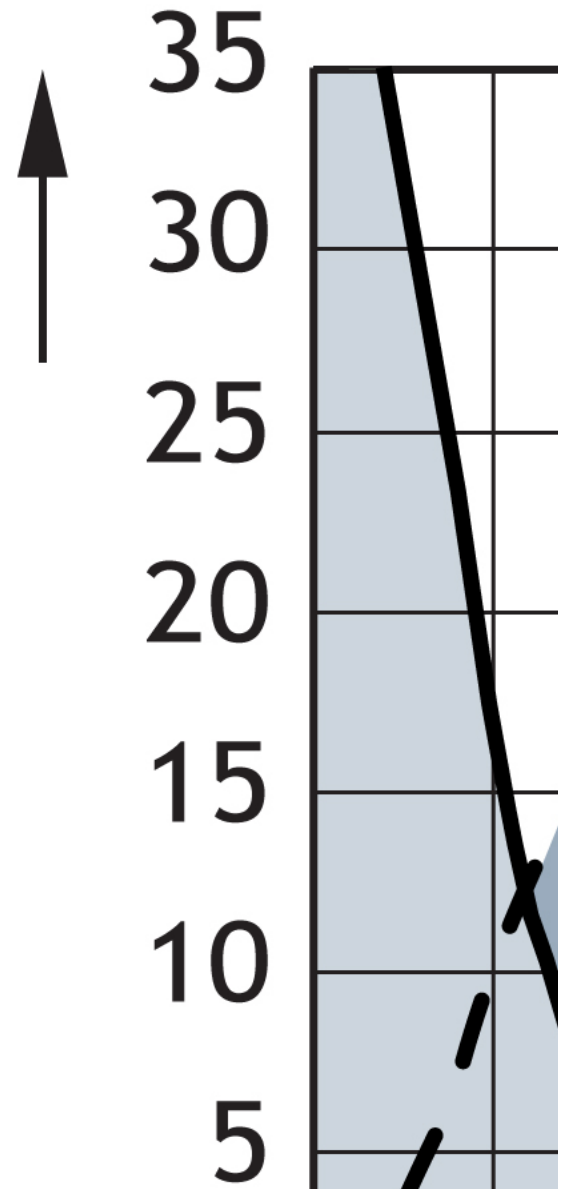
TYPICAL RESPONSE CURVES



Gain

Gain

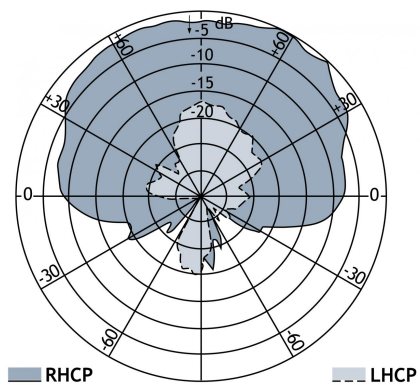
GPS



0
-50

f. Mhz

VERTICAL RADIATION PATTERN



CE



PROCOM France S.A.R.L. se réserve le droit d'améliorer les spécifications sans préavis.

17/12/14