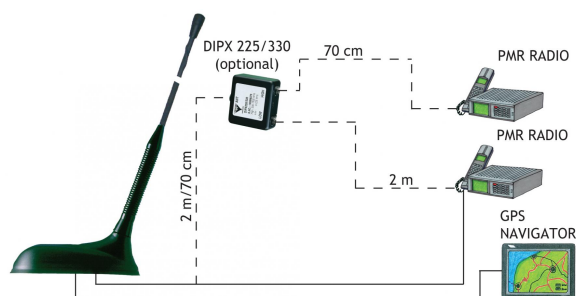


## GPS-C 2/70/.../...

### GPS Antenna with Whip with Shock Spring for the 160 MHz and 450 MHz Bands

#### DESCRIPTION

- External antenna whip mounted on the GPS-Combi mount.
  - Sturdy, general-purpose  $\frac{1}{4}$   $\lambda$  antenna in professional quality.
  - Easily removable whip for car wash.
- GPS-antenna for fixed installations.
  - Full hemispherical coverage.
  - Built-in high gain, low noise amplifier.
  - Right-Hand Circularly Polarized antenna (RHCP).
  - 5 V supply voltage (3 V respectively 12 V available on request).
  - DC supply via RF-connector.
- When ordering the antenna, please state the centre frequency on each band.



#### SPECIFICATIONS FOR WHIP

ELECTRICAL	
MODEL	GPS-C 2/70/.../...
ANTENNA TYPE	Mobile antenna
FREQUENCY	160 MHz freq. to be stated within: 144 - 175 MHz 450 MHz freq. to be stated within: 380 - 470 MHz
IMPEDANCE	Nom. 50 $\Omega$
POLARIZATION	Vertical
GAIN	160 MHz: Approx 0 dB (acc. to EIA RS-329-1) 450 MHz: Approx 0 dB (acc. to EIA RS-329-1)
BANDWIDTH	160 MHz: $\geq 8$ MHz @ SWR $\leq 2.0$ 450 MHz: $\geq 15$ MHz @ SWR $\leq 2.0$
SWR	$\leq 1.5$ @ f.res. in both bands
MAX. POWER	25 W
MECHANICAL	
MATERIALS	Whip: Polyethylene covered copper thread / glass fibre Black-chromed brass Spring: Black-chromed stainless steel
COLOUR	Black
HEIGHT	Approx. 350 mm
WEIGHT	50 g
MOUNTING	On the GPS-Combi mount

#### ORDERING DESIGNATIONS

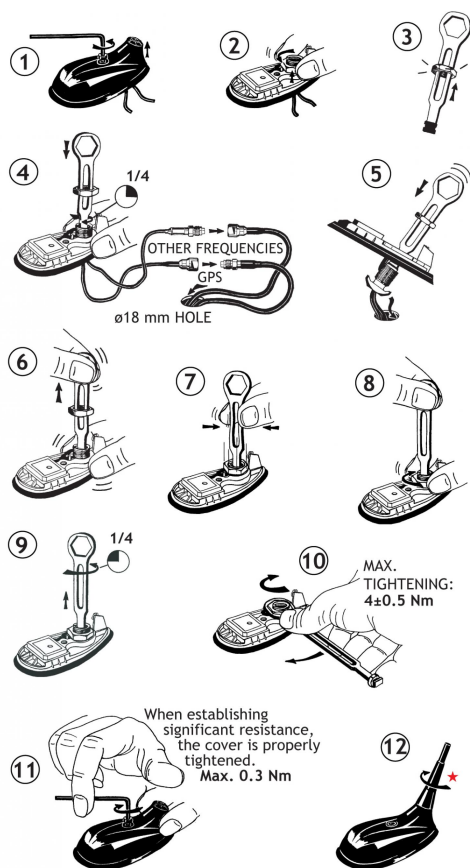
TYPE	PRODUCT NO.
GPS-C 2/70/.../...	132000085
DIPX 225/330-FME (optional)	200000670

When ordering the antenna, please state the centre frequency on each band.

#### SPECIFICATIONS FOR GPS-COMBI MOUNT

ELECTRICAL GENERAL SPECIFICATIONS	
MODEL	GPS-COMBI MOUNT
ANTENNA TYPE	Active patch antenna
FREQUENCY	1575 MHz
IMPEDANCE	Nom. 50 $\Omega$
POLARIZATION	Circular right-hand
COVERAGE	Hemispherical
GAIN	28 dBic in axial direction (typ.)
CROSS-POLARIZATION ATT.	$> 10$ dB (typ.)
SELECTIVITY	$> 45$ dB down @ $\pm 45$ MHz
BUILT-IN AMPLIFIER	
GAIN	$> 30$ dB (typ.)
NOISE FIGURE	$< 1$ dB (typ.)
P <sub>1dB</sub>	Approx. +7 dBm
SWR (output)	$\leq 2.0$
SUPPLY VOLTAGE	5 $\pm$ 0.5 VDC (3 V resp. 12 V on request)
CURRENT CONSUMPTION	Approx. 25 mA
MECHANICAL (ONLY FOR THE GPS-PART)	
MATERIALS	Cu-nite brass Stainless steel Reinforced thermoplastic
ANTENNA COLOUR	Black
TEMP. RANGE	-35° C $\rightarrow$ +75° C
CONNECTOR	FME (male for GPS) + FME (female for mobile antenna)
RECOMMENDED INSTALL. TORQUE	4 $\pm$ 0.5 Nm
DIMENSIONS (H x L)	Approx. 30 x 89 mm
ROOF THICKNESS	Max. 2.5 mm
WEIGHT	Approx. 114 g
MOUNTING	$\varnothing 18.0$ mm dia. hole for roof thickness up to 2.0 mm $\varnothing 18.5$ mm dia. hole for roof thickness 2.0 - 2.5 mm Tools for mounting included

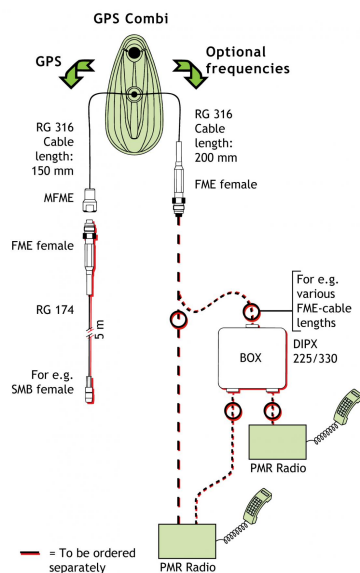
## MOUNTING INSTRUCTIONS



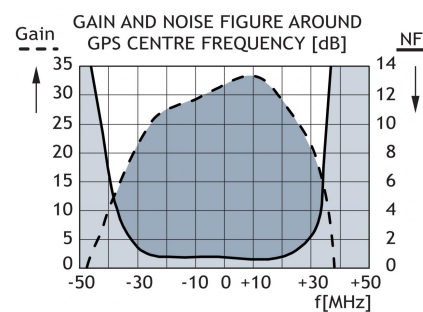
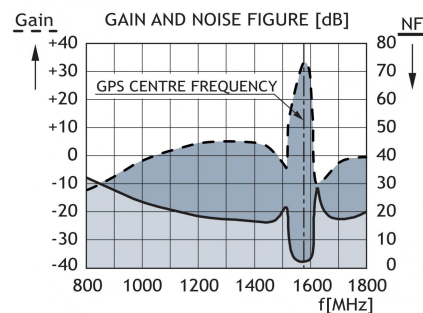
★ The whip should always be dismantled during car wash.

Do not use sealer on rubber gasket or other places.

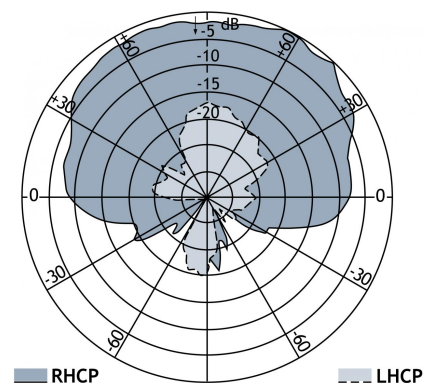
## CABLE MOUNTING



## TYPICAL RESPONSE CURVES



## VERTICAL RADIATION PATTERN



CE



PROCOM France S.A.R.L. se réserve le droit d'améliorer les spécifications sans préavis.

14/11/13