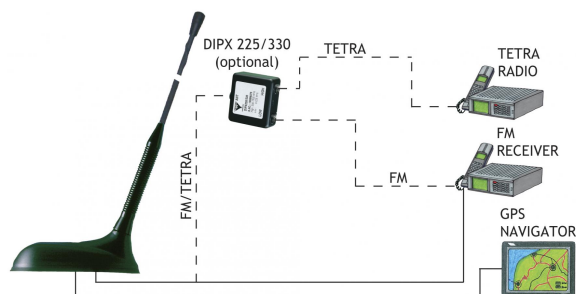


GPS-C MC-TETRA/FM

GPS Antenna with Whip with Shock Spring for the FM Band and TETRA Band

DESCRIPTION

- External antenna whip mounted on the GPS-Combi mount.
 - Sturdy, general-purpose $\frac{1}{4}$ λ antenna in professional quality.
- GPS-antenna for fixed installations.
 - Full hemispherical coverage.
 - Built-in high-gain, low-noise amplifier.
 - Right-Hand Circularly Polarized antenna (RHCP).
 - 5 V supply voltage (3 V respectively 12 V available on request).
 - DC supply via RF-connector.



ORDERING DESIGNATIONS

TYPE	PRODUCT NO.
GPS-C MC-TETRA/FM	132000150
GPS-C MC-TETRA/FM-21-23 mm	132000151
DIPX 225/330-FME (optional)	200000670

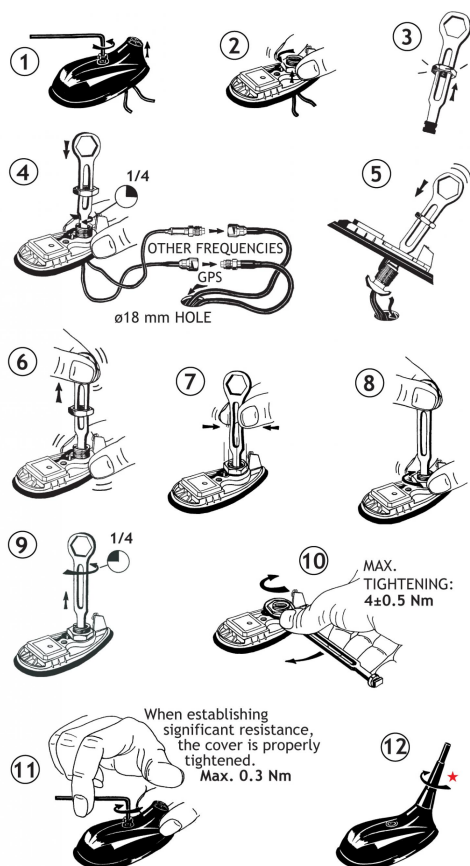
SPECIFICATIONS FOR WHIP

ELECTRICAL	
MODEL	GPS-C MC-TETRA/FM
ANTENNA TYPE	Mobile antenna
FREQUENCY	FM band: 88 - 108 MHz, TETRA band: 380 - 400 MHz
IMPEDANCE	Nom. 50 Ω
POLARIZATION	Vertical
GAIN	FM band: Approx -3 dB (acc. to $\frac{1}{4}$ λ whip on a motorbike) TETRA band: Approx 0 dB (acc. to $\frac{1}{4}$ λ whip on a motorbike)
BANDWIDTH	TETRA band: ≥ 20 MHz @ SWR ≤ 2.0
SWR	≤ 1.5 @ f.res. in both bands
MAX. POWER	25 W
MECHANICAL	
MATERIALS	Whip: Polyethylene-covered copper thread / glass fibre Black-chromed brass Spring: Black-chromed stainless steel
COLOUR	Black
HEIGHT	Approx. 550 mm
WEIGHT	50 g
MOUNTING	On the GPS-Combi mount

SPECIFICATIONS FOR GPS-COMBI MOUNT

ELECTRICAL GENERAL SPECIFICATIONS	
MODEL	GPS-COMBI MOUNT
ANTENNA TYPE	Active patch antenna
FREQUENCY	1575 MHz
IMPEDANCE	Nom. 50 Ω
POLARIZATION	Circular right-hand
COVERAGE	Hemispherical
GAIN	28 dBic in axial direction (typ.)
CROSS-POLARIZATION ATT.	> 10 dB (typ.)
SELECTIVITY	> 45 dB down @ ± 45 MHz
BUILT-IN AMPLIFIER	
GAIN	> 30 dB (typ.)
NOISE FIGURE	< 1 dB (typ.)
P 1dB	Approx. +7 dBm
SWR (output)	≤ 2.0
SUPPLY VOLTAGE	5 \pm 0.5 VDC (3 V resp. 12 V on request)
CURRENT CONSUMPTION	Approx. 25 mA
MECHANICAL (ONLY FOR THE GPS-PART)	
MATERIALS	Cu-nite brass Stainless steel Reinforced thermoplastic
ANTENNA COLOUR	Black
TEMP. RANGE	-35° C \rightarrow +75° C
CONNECTOR	FME (male for GPS) + FME (female for mobile antenna)
RECOMMENDED INSTALL. TORQUE	4 \pm 0.5 Nm
DIMENSIONS (H x L)	Approx. 30 x 89 mm
ROOF THICKNESS	Max. 2.5 mm
WEIGHT	Approx. 114 g
MOUNTING	$\varnothing 18.0$ mm dia. hole for roof thickness up to 2.0 mm. $\varnothing 18.5$ mm dia. hole for roof thickness 2.0 - 2.5 mm Tools for mounting included
OPTIONAL	For mounting hole 21-23 mm use GPS-Combi mount 21-23 mm

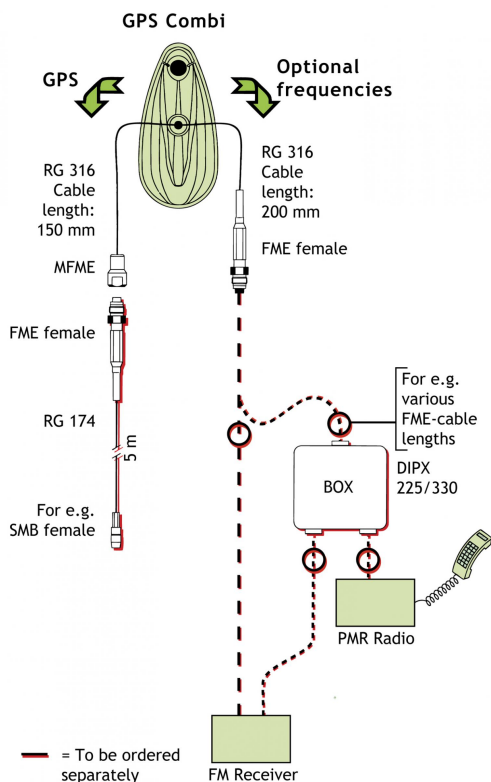
MOUNTING INSTRUCTIONS



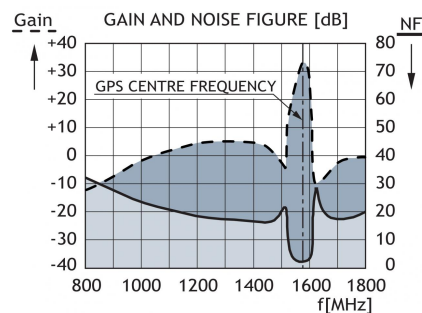
★ The whip should always be dismantled during car wash.

Do not use sealer on rubber gasket or other places.

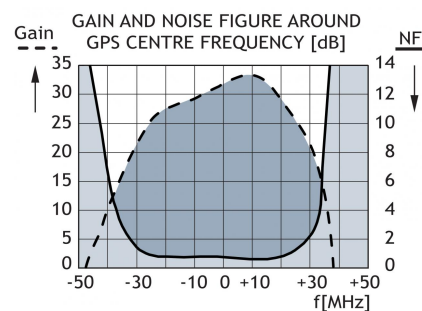
CABLE MOUNTING



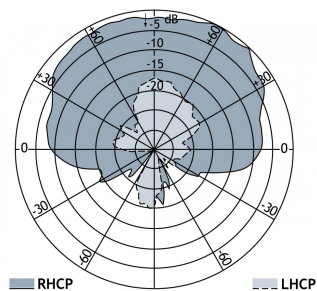
TYPICAL RESPONSE CURVES



TYPICAL RESPONSE CURVES



VERTICAL RADIATION PATTERN



CE



PROCOM France S.A.R.L. se réserve le droit d'améliorer les spécifications sans préavis.
02/12/14