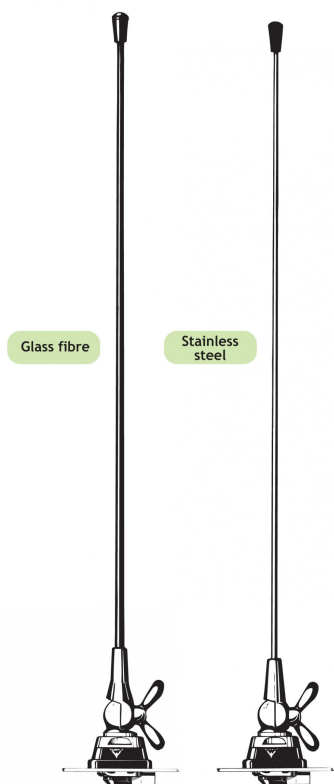


# MH 1-Z

## ¼ λ Mobile Antenna for the 160 MHz Band

### DESCRIPTION

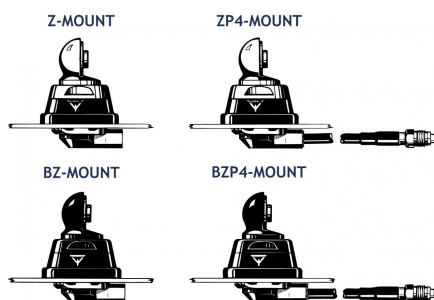
- Sturdy, general-purpose ¼ λ antenna in professional quality.
- Available with glass fiber or stainless steel whip.
- Stainless steel Z-mount with ball-joint and wing screw whip-fastening system.
- Available with bright or black-chromed metal parts (mount and whip):
  - MH 1-Z...: Bright version
  - MH 1-BZ...: Black version
- Simple mounting exclusively with access from the outside. Models with roof thickness from 2 mm to 7.5 mm mounting from the inside.
- Choice between two connection principles: Z-mount:
  - FME-connection (supplied without cable).
  - ZP4-mount: Permanently attached 4 m cable terminated with FME-connector.



#### Hat screw option:



For antenna delivered with hat screw instead of wing screw add a K to the antenna designation.



### ORDERING DESIGNATIONS

TYPE WHIP STAINLESS STEEL	PRODUCT NO.	TYPE WHIP GLASS FIBER	PRODUCT NO.	MOUNT VERSION
MH 1-ZR	130000720	MH 1-Z	130000714	Z-mount with FME-system BRIGHT
MH 1-BZR	130000725	MH 1-BZ	130000719	Z-mount with FME-system BLACK
MH 1-ZP4R	130000721	MH 1-ZP4	130000715	ZP4-mount with 4 m cable + FME-connector BRIGHT
MH 1-BZP4R	130000717	MH 1-BZP4	130000716	BZP4-mount with 4 m cable + FME-connector BLACK

### SPECIFICATIONS

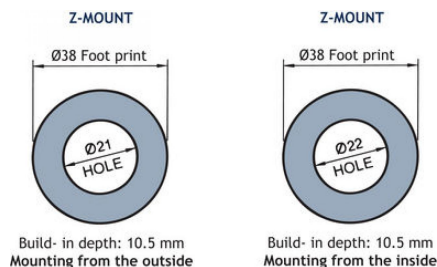
ELECTRICAL	
MODEL	MH 1-Z
ANTENNA TYPE	¼ λ mobile whip antenna
FREQUENCY	Tunable by cutting within: 144...175 MHz (Also applicable: 175...225 MHz)
IMPEDANCE	Nom. 50 Ω
POLARIZATION	Vertical
GAIN	0 dB (acc. to EIA RS-329-1)
BANDWIDTH	≥ 15 MHz @ SWR ≤ 2.0
SWR	≤ 1.3 @ f.res.
MAX. POWER	150 W
MECHANICAL	
MATERIALS	<b>Whip:</b> Conical glass fiber or stainless steel Chromed brass <b>Mount:</b> Chromed brass Weather- and shockproof plastics Stainless steel
RECOMMENDED INSTALLATION TORQUE	7.5 ± 1 Nm
COLOUR	Bright or black, see above
HEIGHT	Approx. 53 cm
WEIGHT	Z-version: Approx. 150 g ZP4-version: Approx. 300 g
MOUNTING	ø21 mm dia. hole (For roof thickness 2 mm up to 7.5 mm mounting hole should be ø22 mm dia.)
ROOF THICKNESS	Max. 2.0 mm (Models up to 7.5 mm on request)

## INSTALLATION

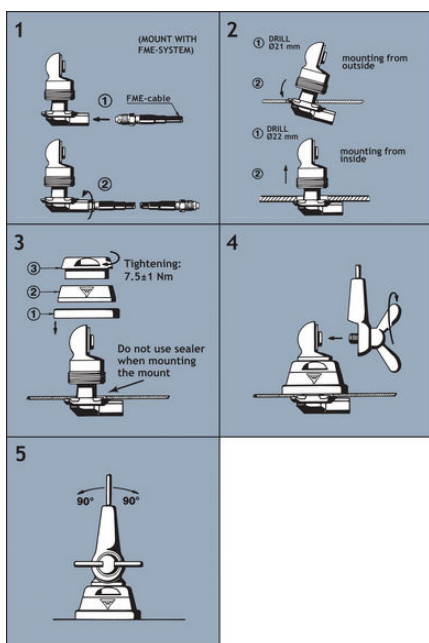
This antenna is provided with type Z-mount. The whip is fastened to the mount by means of our standard ball-joint and wing screw system. The adjustable ball-joint ensures that the whip can always be mounted in a vertical position independent of the angle of the installation spot.

The Z-mount is particularly well suited for mounting on car-roofs because of its ability to be installed exclusively with access from the outside. The Z-Mount for roof thickness from 2 mm to 7.5 mm must be mounted from the inside. However, the antenna can be installed anywhere on the car, as the BZ-mount is equally well suited for mounting on e.g. trunk or wing.

### 1. INSTALLATION DIMENSIONS



### 2. INSTALLATION STEPS

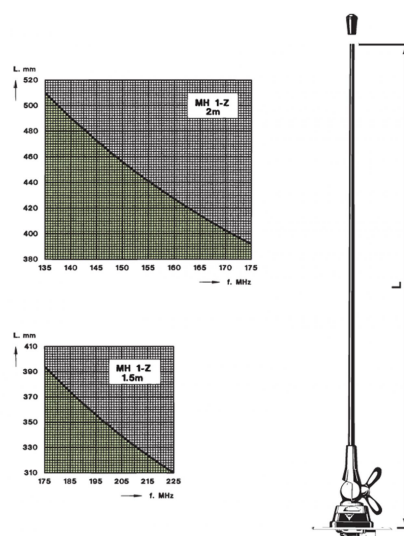


Do not use sealer on rubber gasket or other places.

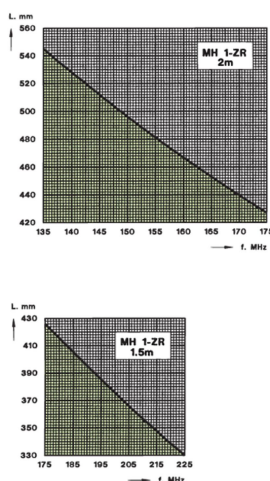
## 3. TUNING

The antenna should always be tuned using an SWR-meter. The cutting diagrams below serve as a guide for this procedure.

### GLASS FIBRE WHIP



### STAINLESS STEEL WHIP



PROCOM France S.A.R.L. se réserve le droit d'améliorer les spécifications sans préavis.  
07/07/11