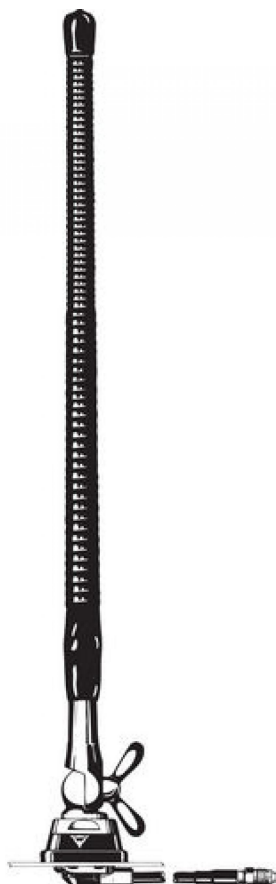


# ML 3-ZP4

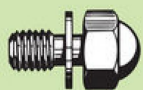
## Helical Mobile Antenna for the 80 MHz Band

### DESCRIPTION

- Reduced-size quarter-wave antenna for all applications where height is a problem.
- Ideal on busses, trucks, building-site machines, forestry vehicles etc.
- High efficiency due to the "continuous loading" helical principle.
- Stainless steel ZP4-mount with ball-joint and wing screw whip-fastening system.
- Simple mounting exclusively with access from the outside. Models for roof thickness from 2 mm to 7.5 mm with mounting from the inside.
- Delivered with 4 m cable permanently attached to the mount and terminated with FME-connector.



#### Hat screw option:



For antenna delivered with hat screw instead of wing screw add a K to the antenna designation.

#### ZP4-MOUNT



Please note that the ML 3-type ZP4-mount is provided with a built-in matching unit. Consequently, the mount cannot be used together with other whips.

### ORDERING DESIGNATIONS

| TYPE     | PRODUCT NO. |
|----------|-------------|
| ML 3-ZP4 | 130000655   |

### SPECIFICATIONS

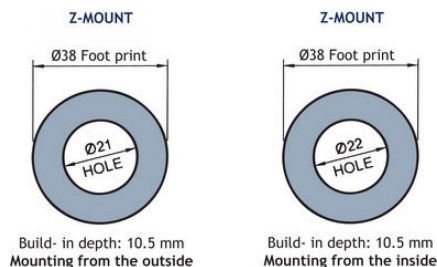
| ELECTRICAL                      |  |
|---------------------------------|--|
| MODEL                           | ML 3-ZP4   |
| ANTENNA TYPE                    | Shortened $\frac{1}{4} \lambda$ helical antenna  |
| FREQUENCY                       | Tunable by cutting within: 66....88 MHz  |
| IMPEDANCE                       | Nom. 50 $\Omega$   |
| POLARIZATION                    | Vertical   |
| GAIN                            | Approx. - 3 dB (acc. to EIA RS-329-1)  |
| SWR                             | $\leq 2.5$ @ $f_c \pm 0.5$ MHz   |
| MAX. POWER                      | 30 W   |
| MECHANICAL                      |  |
| MATERIALS                       | <b>Whip:</b><br>Steel helix moulded in flexible thermoplastic rubber<br>Chromed brass<br><b>Mount:</b><br>Chromed brass<br>Weather- and shockproof plastics<br>Stainless steel |
| RECOMMENDED INSTALLATION TORQUE | 7.5 $\pm$ 1 Nm   |
| CABLE                           | 4 m RG 58  |
| COLOUR                          | Bright/black   |
| HEIGHT                          | Approx. 37 cm  |
| WEIGHT                          | Approx. 400 g  |
| MOUNTING                        | $\varnothing 21$ mm dia. hole<br>(For roof thickness 2 mm up to 7.5 mm mounting hole should be $\varnothing 22$ mm dia.)   |
| ROOF THICKNESS                  | Max. 2.0 mm<br>(Models up to 7.5 mm on request)  |

## INSTALLATION

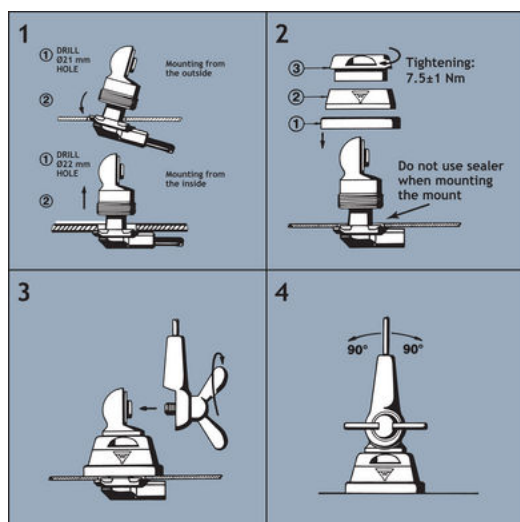
This antenna is supplied with type ZP4-mount. The whip is fastened to the mount by means of our standard ball-joint and wing screw system. The adjustable ball-joint ensures that the whip can always be mounted in a vertical position independent of the angle of the installation spot.

The ZP4-mount is particularly well suited for mounting on car roofs as it can be installed exclusively with access from the outside. The ZP4-Mount for roof thickness from 2 mm to 7.5 mm must be mounted from the inside. However, the antenna can be installed anywhere on the car, as the ZP4-mount is equally well suited for mounting on e.g. trunk or wing.

### 1. INSTALLATION DIMENSIONS



### 2. INSTALLATION STEPS



Do not use sealer on rubber gasket or other places.

## 3. TUNING

The antenna should always be post-adjusted using an SWR 3000 or the like.  
DO NOT cut too much at a time - one complete winding of the helix moves the antenna resonance considerably.



### PLEASE NOTE

To make this antenna operate as efficiently as possible, a matching unit has been built into the antenna mount. Consequently, neither mount nor whip can be used together with other mounts/whips.



PROCOM France S.A.R.L. se réserve le droit d'améliorer les spécifications sans préavis.  
11/12/12