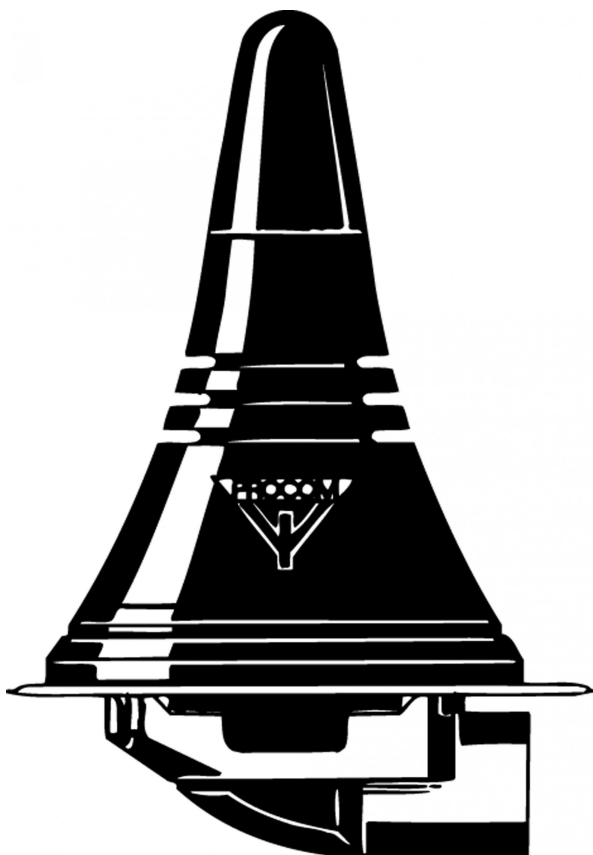


MU 2401/UMTS-LX

0 dB Mobile Antenna for the UMTS Band (1900 – 2200 MHz)

DESCRIPTION

- Mobile antenna for the UMTS Band (1900 – 2200 MHz).
- Black-chromed whip in nice, discrete design.
- Approx. 0 dB gain.
- Stainless steel LX-mount – professional quality in elegant and smooth design.
- Especially suited for roof-mounting.
- Provided with FME-connection (supplied without cable).
- Bendable section in mount for adjustment of whip (tiltable 15° by hand).
- Installation with access from the outside only (requiring an 18 mm dia. hole).



Ordering designations

TYPE NO.	PRODUCT NO.
MU 2401/UMTS-LX	130001275

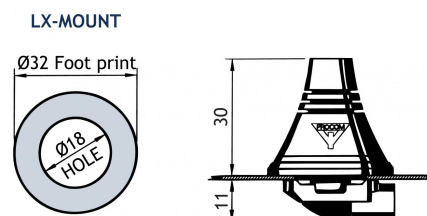
SPECIFICATIONS

ELECTRICAL	
MODEL	MU 2401/UMTS-LX
ANTENNA TYPE	1/4 λ mobile antenna
FREQUENCY	UMTS band (1900 – 2200 MHz)
IMPEDANCE	Nom. 50 Ω
POLARISATION	Vertical
GAIN	Approx. 0 dB (acc. to EIA RS-329-1)
BAND WIDTH	≥ 200 MHz @ SWR ≤ 2
SWR	≤ 1.75 @ f. res.
MAX. POWER	25 W
MECHANICAL	
MATERIALS	Whip: Black-chromed brass Mount: Stainless steel Cu-nite brass Environment-proof plastics
RECOMMENDED INSTALLATION TORQUE	3.5 Nm max.
CABLE	FME-cable to be ordered separately
COLOUR	Black
HEIGHT	Approx. 40 mm
WEIGHT	Approx. 30 g
MOUNTING	18 mm dia. hole

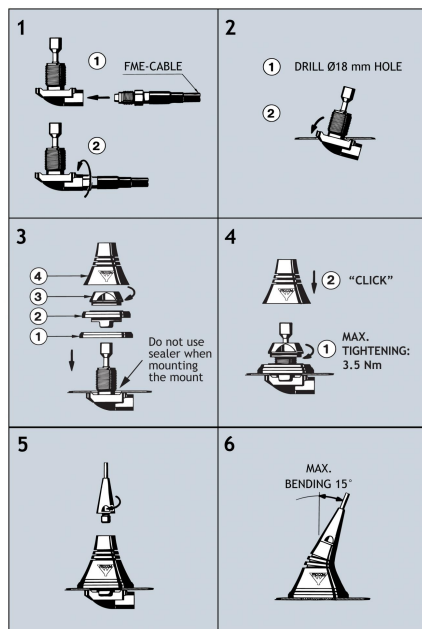
INSTALLATION

The LX-mount is especially suited for roof-mounting. It is recommended to mount the antenna at the centre of the roof to ensure the best omnidirectional coverage. Mounting can take place in an 18 mm dia. hole with access from the outside only.

INSTALLATION DIMENSIONS



INSTALLATION STEPS



PLEASE NOTE: When tightening the revolving nut (see picture 4), special care must be taken to keep the spanner in the correct position.

3. TUNING

The antenna is delivered factory-tuned and requires no further tuning.



PROCOM France S.A.R.L. se réserve le droit
d'améliorer les spécifications sans préavis.

15/12/11