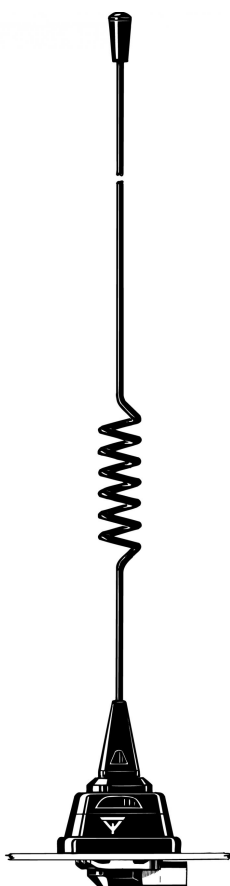


MU 904-ZG/...

Collinear 4 dB Mobile Antenna for the 900 MHz Band

DESCRIPTION

- 4 dB mobile antenna with black-chromed, stainless steel whip.
- 3 models, type "l", "m" and "h", cover band segments suiting the most common 900 MHz CELLULAR networks such as EAMPS, ETACS, NMT-900 and EGSM.
- Stainless steel ZG-mount with M8 x 1-thread whip-fastening system.
- Simple mounting exclusively with access from the outside.
- Choice between two connection principles: ZG-mount: FME-connection (supplied without cable).
- ZGP4-mount: Permanently attached 4 m low loss cable terminated with FME-connector.



ZG-MOUNT

ZGP4-MOUNT



ORDERING DESIGNATIONS

TYPE	PRODUCT NO.	FREQUENCY	MOUNT VERSION
MU 904-ZG/l	130001182	824 - 894 MHz (EAMPS)	ZG-mount with FME
MU 904-ZG/m	130001185	872 - 950 MHz (ETACS)	
MU 904-ZG/h	130001180	880 - 960 MHz (EGSM&NMT-900)	
MU 904-ZGP4/l	130001184	824 - 894 MHz (EAMPS)	ZGP4-mount with 4 m cable and FME-connector
MU 904-ZGP4/m	130001186	872 - 950 MHz (ETACS)	
MU 904-ZGP4/h	130001181	880 - 960 MHz (EGSM&NMT-900)	

SPECIFICATIONS

ELECTRICAL	
MODEL	MU 904-ZG/...
ANTENNA TYPE	Collinear mobile antenna
FREQUENCY	900 MHz-band covered by three models
IMPEDANCE	Nom. 50 Ω
POLARIZATION	Vertical
GAIN	4 dB (acc. to EIA RS-329-1)
BANDWIDTH	≥ 50 MHz @ SWR ≤ 1.5 ≥ 100 MHz @ SWR ≤ 2.0
SWR	≤ 1.3 @ f. res.
MAX. POWER	60 W
MATERIALS	Whip: Stainless steel and brass, black-chromed Mount: Black-chromed brass Weather- and shockproof plastics Stainless steel
RECOMMENDED INSTALLATION TORQUE	7.5 \pm 1 Nm
COLOUR	Black
HEIGHT	Approx. 32 cm
WEIGHT	ZG-version: Approx. 100 g ZGP4-version: Approx. 240 g
MOUNTING	21 mm dia. hole

INSTALLATION

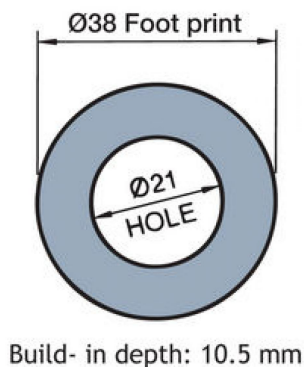
This antenna should always be mounted on the car roof to ensure best omnidirectional coverage. The antenna is provided with our type ZG-mount for mounting from the outside in a 21 mm dia. hole.

The ZG-mount is provided with an M8 x 1 thread mount system. This construction meets the demand for a low-profile mobile mount with a slim appearance and with protection against theft of the antenna whip.

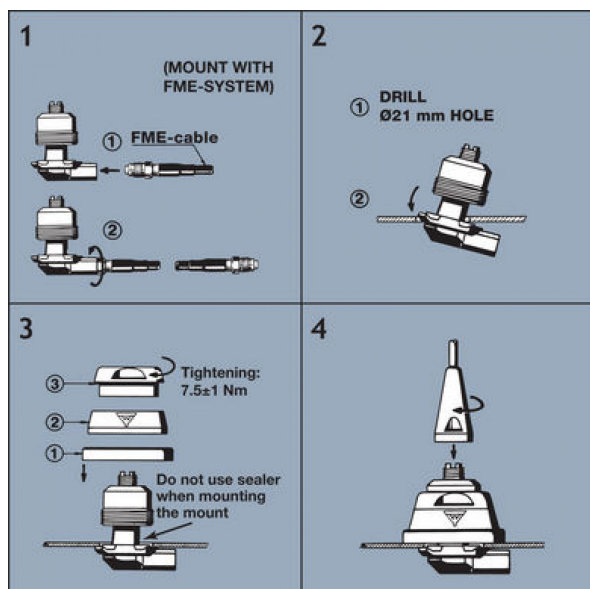
When cleaning the car in car-washing machines, the whip is easily removed using a spanner, size 12 mm. The whip is refitted again by screwing it onto the thread stud and tightening it with the spanner.

1. INSTALLATION DIMENSIONS

ZG-MOUNT



2. INSTALLATION STEPS



Do not use sealer on rubber gasket or other places.

3. TUNING

The antenna is delivered factory-tuned and requires no further tuning.



PROCOM France S.A.R.L. se réserve le droit d'améliorer les spécifications sans préavis.

10/08/12