

# 44 SMC Specifications

---

SMC Plug



SMC Jack



## ELECTRICAL

Impedance	50 ohms
Frequency	DC to 10GHz
VSWR	1.15 + 0.04f(GHz) Straight 1.23 + 0.04f(GHz) Right Angle
Insertion Loss	0.4dB Maximum (Straight) 0.6dB Maximum (Right Angle)
RF Leakage	-55dB Minimum
Insulation Resistance	1Gohms Minimum
Inner Contact Resistance	6mohms Maximum
Outer Contact Resistance	1mohms Maximum
Working Voltage	335V RMS
Dielectric Withstanding Voltage	750V RMS

## MECHANICAL

Durability	500 mating cycles
Cable Retention	Equal to cable breaking strain
Mating Torque	25 to 35NM (35-50 inch pounds)

## ENVIRONMENTAL

Temperature Range	-65 to +165 degrees centigrade
-------------------	--------------------------------

## MATERIALS

Bodies	Brass, Gold or Nickel Plated
Pins	Brass, Gold Plated
Contacts	Beryllium Copper, Gold Plated
Ferrules	Brass, Gold or Nickel Plated
Insulators	PTFE
End Caps	Brass, Gold or Nickel Plated
Gaskets	Silicon Rubber
Panel Nuts	Brass, Gold or Nickel Plated
Panel Washers	Brass, Gold or Nickel Plated

All of the above products are manufactured in accordance with MIL-C-39012.

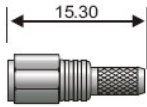
The above specifications are typical although some variations may occur.

EURO RADIO SYSTEM

Tél: +33 (0)1 39 31 28 00 Fax: +33 (0)1 39 31 27 00 E-Mail: [commercial@ers.fr](mailto:commercial@ers.fr) Site: [www.ers.fr](http://www.ers.fr)

# SMC Cable Fixing 45

## Crimp Plug



PART NUMBER	CABLE TYPE	PLATING	STRIP DIMS	HEX SIZES
MC15-D316-C01	RD316	Gold	S19	H8
MC15-D316-C06	RD316	Nickel	S19	H8
MC15-0174-C01	RG174, 188, 316	Gold	S19	H1
MC15-0174-C06	RG174, 188, 316	Nickel	S19	H1

CRIMP HEX SIZES (ferrule / contact)

H1 3.25mm 0.72mm sq.

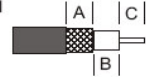
H8 3.83mm 0.72mm sq.

See pages 85-86 for application tooling

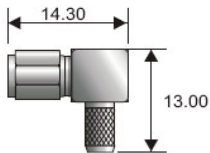
Strip Dimensions - see Illustration S.1

S19: A = 5.0mm B = 2.5mm C = 2.5mm

Illustration S.1



## Crimp Right Angle Plug

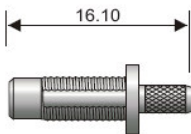


PART NUMBER	CABLE TYPE	PLATING	STRIP DIMS	HEX SIZES
MC17-D316-C01	RD316	Gold	S20	H8
MC17-D316-C06	RD316	Nickel	S20	H8
MC17-0174-C01	RG174, 188, 316	Gold	S20	H1
MC17-0174-C06	RG174, 188, 316	Nickel	S20	H1

Strip Dimensions - see Illustration S.1

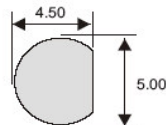
S20: A = 4.5mm B = 4.0mm C = 1.5mm

## Crimp Bulkhead Jack



Max. Panel Thickness 2.4mm

PART NUMBER	CABLE TYPE	PLATING	STRIP DIMS	HEX SIZES
MC02-D316-C01	RD316	Gold	S21	H8
MC02-D316-C06	RD316	Nickel	S21	H8
MC02-0174-C01	RG174, 188, 316	Gold	S21	H1
MC02-0174-C06	RG174, 188, 316	Nickel	S21	H1



Strip Dimensions - see Illustration S.1

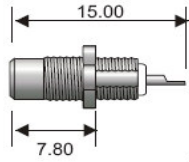
S21: A = 5.0mm B = 3.5mm C = 2.5mm

EURO RADIO SYSTEM

Tél: +33 (0)1 39 31 28 00 Fax: +33 (0)1 39 31 27 00 E-Mail: [commercial@ers.fr](mailto:commercial@ers.fr) Site: [www.ers.fr](http://www.ers.fr)

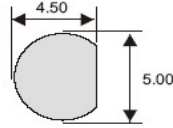
# 46 SMC Panel an PCB Fixing

## Panel Mount Jack

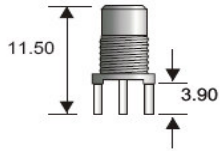


Max. Panel Thickness 2.4mm

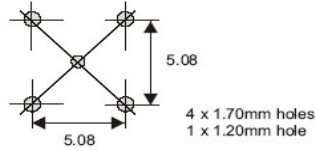
PART NUMBER	DETAILS	PLATING
MC62-X001-N01	50 ohms	Gold
MC62-X001-N06	50 ohms	Nickel



## Vertical PCB Jack



PART NUMBER	DETAILS	PLATING
MC10-X150-N01	50 ohms	Gold
MC10-X150-N06	50 ohms	Nickel



EURO RADIO SYSTEM

Tél: +33 (0)1 39 31 28 00 Fax: +33 (0)1 39 31 27 00 E-Mail: [commercial@ers.fr](mailto:commercial@ers.fr) Site: [www.ers.fr](http://www.ers.fr)